

## NewRedo Ltd Carbon Reduction Plan

**Supplier name:** NewRedo Ltd

**Publication date:** 31 May 2026.

### Commitment to achieving Net Zero

NewRedo Ltd is committed to achieving net zero emissions by 2045.

This Carbon Reduction Plan has been prepared in accordance with PPN 006 and the associated guidance and reporting standard for Carbon Reduction Plans. The plan outlines NewRedo Ltd's baseline emissions, current emissions profile, reduction activities undertaken to date and future initiatives that will support the achievement of net zero emissions by 2045.

### Baseline Emissions Footprint

Baseline emissions are a record of the greenhouse gases that have been produced in the past and were produced prior to the introduction of any strategies to reduce emissions. Baseline emissions are the reference point against which emissions reduction can be measured.

**Baseline Year: 2022 ( 01st January 2022 - 31st December 2022)**

#### Additional Details relating to the Baseline Emissions calculations.

NewRedo Ltd calculates emissions using TRACE carbon accounting software, which measures emissions across Scope 1, Scope 2 and Scope 3 categories in accordance with the Greenhouse Gas Protocol. Emissions are calculated using a combination of DEFRA Government Conversion Factors and spend-based methodologies where supplier-specific data is unavailable. The organisational boundary follows the operational control approach.

#### Baseline year emissions:

EMISSIONS	TOTAL (tCO <sub>2</sub> e)
Scope 1	0.0
Scope 2	3.9

<b>Scope 3 (Included Sources)</b>	27.6
Purchased Goods and Services	26.2
Transportation and distribution from suppliers	0.0
Transportation and distribution to customers	0.0
Waste generated in operations	0.0
Business travel	0.3
Employee commuting and home working	1.1
<b>Total Emissions</b>	<b>31.5</b>

### Current Emissions Reporting

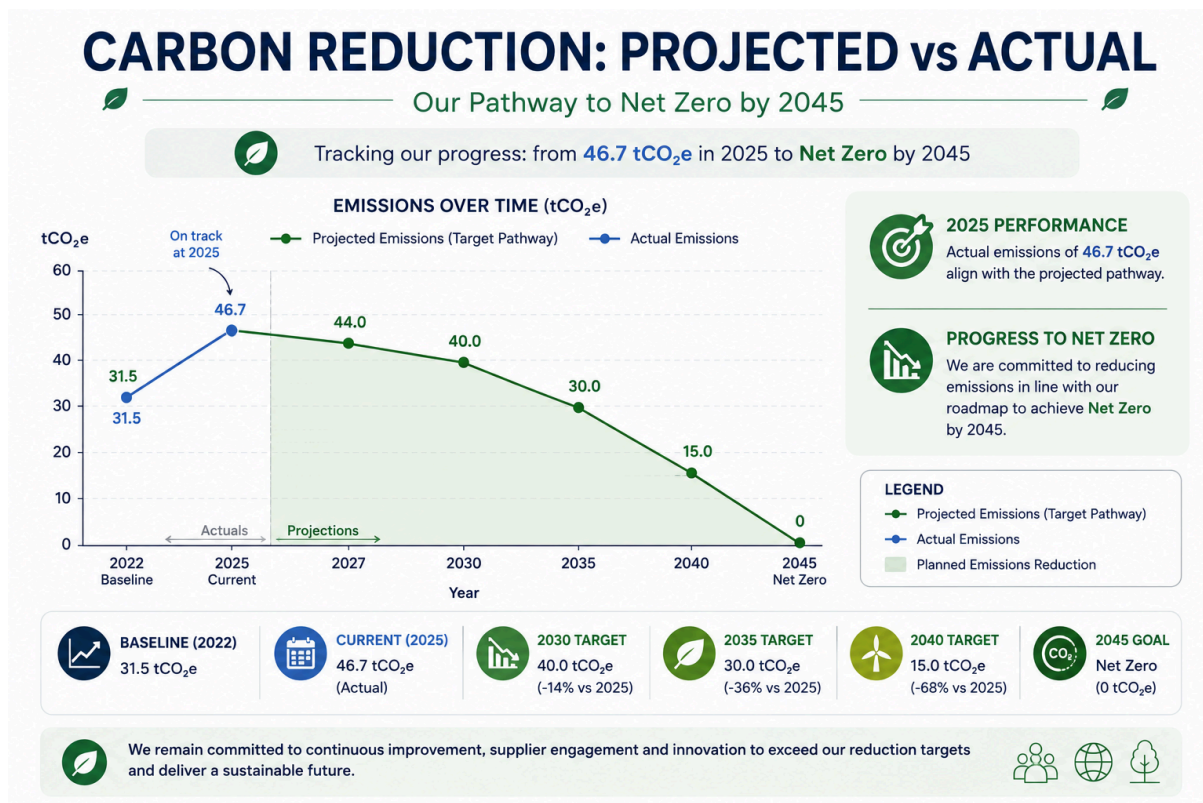
Reporting Year: 2025 ( ( 01st January 2025 - 31st December 2025)	
EMISSIONS	TOTAL (tCO <sub>2</sub> e)
<b>Scope 1</b>	0.0
<b>Scope 2</b>	0.0
<b>Scope 3 (Included Sources)</b>	46.7
Purchased Goods and Services	45.3
Transportation and distribution from suppliers	0.0
Transportation and distribution to customers	0.0
Waste generated in operations	0.0
Business travel	1.0
Employee commuting and home working	0.4
<b>Total Emissions</b>	<b>46.7</b>

## Emissions reduction targets

In order to continue our progress to achieving net zero, we have adopted the following carbon reduction targets.

We project that carbon emissions will decrease over the next five years to **35.0 tCO<sub>2</sub>e** by **2030**. This is a reduction of **25%**.

Progress against these targets can be seen in the graph below:



NewRedo Ltd remains committed to achieving net zero emissions by 2045. Although emissions have increased since the baseline year due to organisational growth, the company has identified significant opportunities to reduce emissions through supply chain engagement, sustainable procurement and low-carbon operational practices.

## Carbon Reduction Projects

The following environmental management measures and projects have been completed or implemented since the 2022 baseline. The carbon emission reduction achieved by these schemes equate to **4.6 tCO<sub>2</sub>e**, a **14.6%** reduction against the 2022 baseline and the measures will be in effect when performing the contract.

## Environmental Management

NewRedo has implemented environmental management practices that provide a structured approach to monitoring and reducing environmental impacts.

#### **Remote Working and Virtual Collaboration**

The organisation promotes flexible working and remote collaboration to minimise commuting and business travel emissions. This has contributed to a reduction in employee commuting emissions from 1.1 tCO<sub>2</sub>e (baseline) to 0.4 tCO<sub>2</sub>e (current), a saving of 0.7 tCO<sub>2</sub>e.

#### **Paperless Operations**

Digital documentation, electronic signatures and cloud-based collaboration tools are used wherever practical.

#### **Sustainable Technology Delivery**

NewRedo supports customers in adopting sustainable technology practices, including cloud optimisation, virtualisation and energy-efficient software solutions.

#### **Responsible Procurement**

Environmental considerations are incorporated into procurement activities and supplier selection processes where practical.

#### **Renewable Energy Transition**

The transition to 100% renewable electricity has eliminated all Scope 2 emissions, reducing from 3.9 tCO<sub>2</sub>e (baseline) to 0.0 tCO<sub>2</sub>e (current), a saving of 3.9 tCO<sub>2</sub>e.

### **Future carbon reduction initiatives**

In the future we hope to implement further measures such as:

#### **Sustainable Supply Chain Programme**

As purchased goods and services account for approximately 97% of emissions, NewRedo will:

Engage suppliers regarding carbon reduction commitments.

Request supplier-specific emissions data.

Prioritise suppliers with recognised environmental credentials.

Include sustainability considerations in procurement decisions.

#### **Sustainable Software Engineering**

The organisation will continue to develop software solutions that minimise processing requirements, storage demands and unnecessary data transfer.

#### **Travel Reduction Strategy**

Remote collaboration tools will continue to be prioritised over physical travel wherever practical.

#### **Employee Sustainability Programme**

Employee awareness campaigns, training sessions and sustainability initiatives will support environmentally responsible behaviours throughout the organisation.

## Carbon Measurement and Reporting

Annual carbon reporting and management reviews will ensure progress remains aligned with net zero objectives.

## Declaration and Sign Off

This Carbon Reduction Plan has been completed in accordance with PPN 006 and associated guidance and reporting standards for Carbon Reduction Plans.

Emissions have been reported and recorded in accordance with the published reporting standard for Carbon Reduction Plans and the GHG Reporting Protocol corporate standard<sup>1</sup> and uses the appropriate Government emission conversion factors for greenhouse gas company reporting<sup>2</sup>.

Scope 1 and Scope 2 emissions have been reported in accordance with SECR requirements, and the required subset of Scope 3 emissions have been reported in accordance with the published reporting standard for Carbon Reduction Plans and the Corporate Value Chain (Scope 3) Standard<sup>3</sup>.

This Carbon Reduction Plan has been reviewed and signed off by the board of directors (or equivalent management body).

### Signed on behalf of the Supplier:



Royd Brayshay

CEO - NewRedo Ltd

Date: ...01/06/2026.....

.

---

<sup>1</sup> <https://ghgprotocol.org/corporate-standard>

<sup>2</sup> \_\_\_\_\_

<https://www.gov.uk/government/collections/government-conversion-factors-for-company-reporting>

<sup>3</sup> <https://ghgprotocol.org/standards/scope-3-standard>